

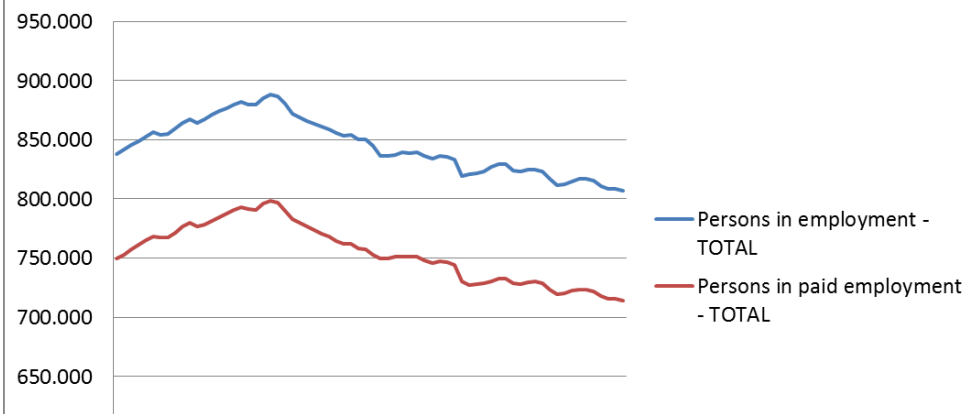


Persons in employment by activities, Slovenia

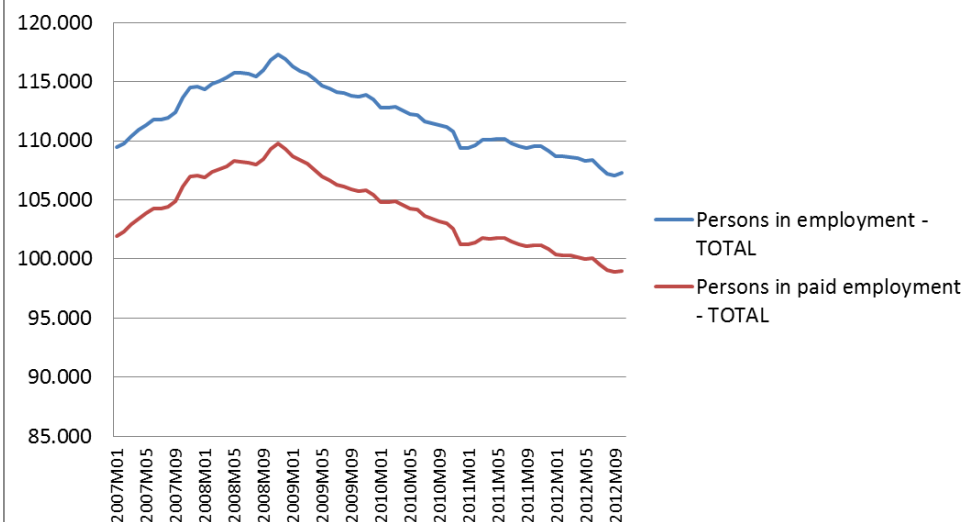
Activities - TOTAL	2007M10	%	2012M10	%	Index 12/07
Persons in employment	864.490	100	807.141	100	93
Persons in paid employment	776.976	90	713.704	88	92
Self employed persons	87.514	10	93.437	12	107
TRADE	2007M10	%	2012M10	%	Index 12/07
Persons in employment	113.672	100	107.260	100	94
Persons in paid employment	106.131	93	99.020	92	93
Self employed persons	7.541	7	8.240	8	109

Source: Statistical office of the Republic of Slovenia

Persons in employment 2007-2012 (Activities TOTAL)



Persons in employment 2007-2012 (Trade)





Persons in employment by activity (NACE Rev. 2), 5-year age groups and sex, Slovenia, 2011

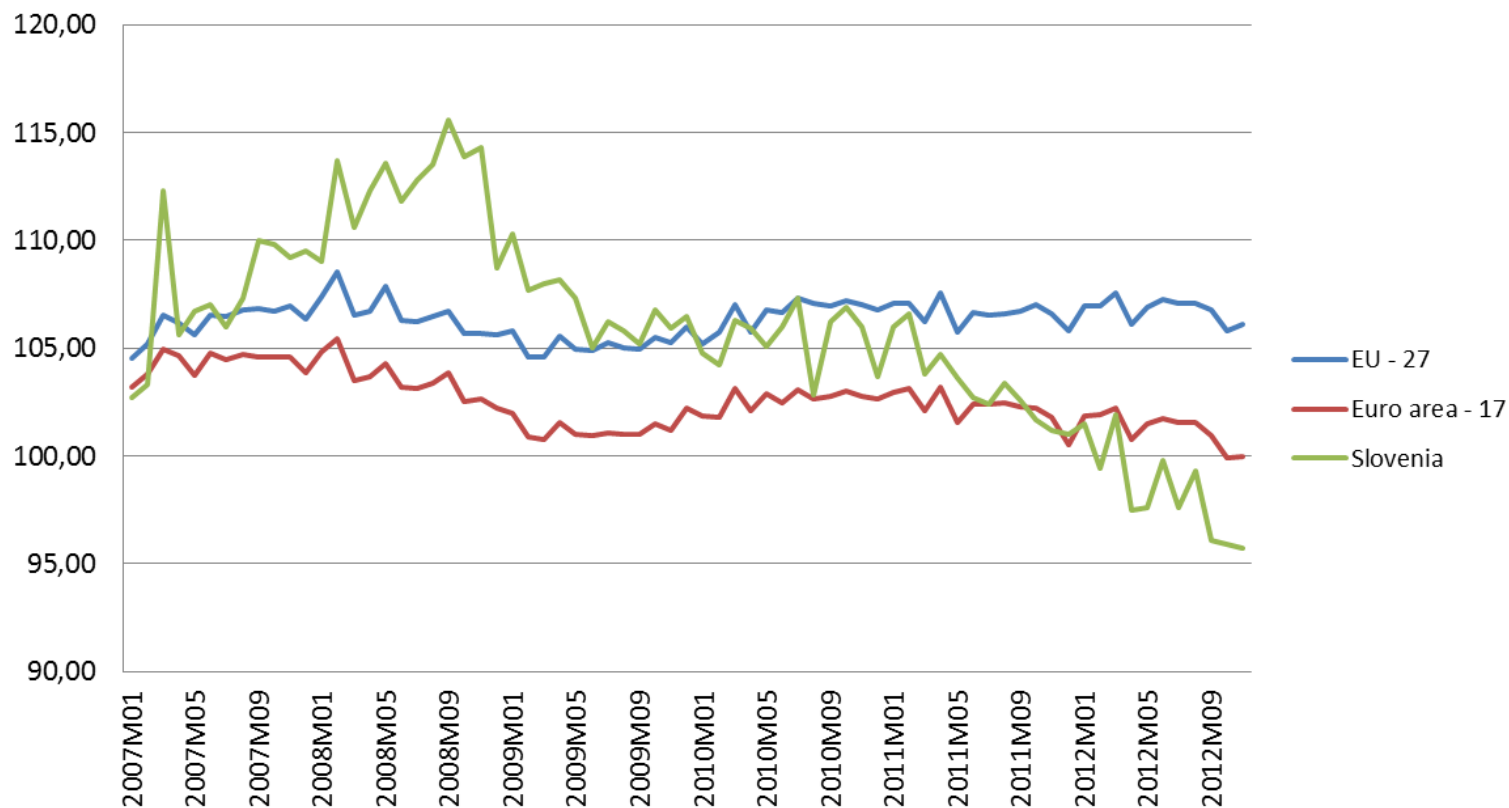
Activities - TOTAL	Age - TOTAL	15-19 years	20-24 years	25-29 years	30-34 years	35-39 years	40-44 years	45-49 years	50-54 years	55-59 years	60-64 years	65 years and over
Sex - TOTAL	817.311	0,2	3,7	11,2	15,5	15,7	15,2	15,9	13,7	7,5	1,3	0,2
Men	452.062	0,3	4,5	11,4	15,2	15,1	14,4	14,9	13,1	8,9	1,9	0,3
Women	365.249	0,1	2,7	10,9	15,8	16,3	16,1	17,1	14,4	5,7	0,6	0,1
G - Trade	Age - TOTAL	15-19 years	20-24 years	25-29 years	30-34 years	35-39 years	40-44 years	45-49 years	50-54 years	55-59 years	60-64 years	65 years and over
Sex - TOTAL	109.157	0,2	4,4	13,6	18,2	17,5	14,2	14,4	11,5	5,3	0,6	0,1
Men	52.429	0,3	5,3	13,3	18,0	17,3	13,8	13,2	10,4	7,2	1,1	0,1
Women	56.728	0,1	3,5	13,9	18,5	17,6	14,6	15,6	12,5	3,5	0,2	0,0

Source: Statistical Office of the Republic of Slovenia.



## Retail trade except of motor vehicles, motorcycles and fuel turnover, January 2007 - November 2012

2005=100, seasonally adjusted, deflated



Source: Eurostat



Registered unemployed persons by age groups,  
december 2012

Age (years)	
< 17	153
18 - 24	10.743
25 - 29	16.954
30 - 39	26.420
40 - 49	23.632
50 - 59	36.805
> 60	3.354
Total	118.061

Registered unemployed persons by educational attainment,  
december 2012

Education	
I	35.010
II	5.657
III	918
IV	28.587
V	31.018
VI	4.710
VII+VIII	11.119
B.Š.	1.042
TOTAL	118.061

Registered unemployed persons by duration of  
unemployment, december 2012

Duration	
< 2 months	30.704
3 - 5 months	16.748
6 - 8 months	9.001
9 - 11 months	7.848
12 - 23 months	20.188
24 - 35 months	12.040
3 - 4 months	12.292
5 - 7 years	4.993
> 8 years	4.247
TOTAL	118.061