



PROJECT TRASDEM:

Empowerment of social dialogue in trade sector as a contribution to the overarching EU employment and social policy challenges

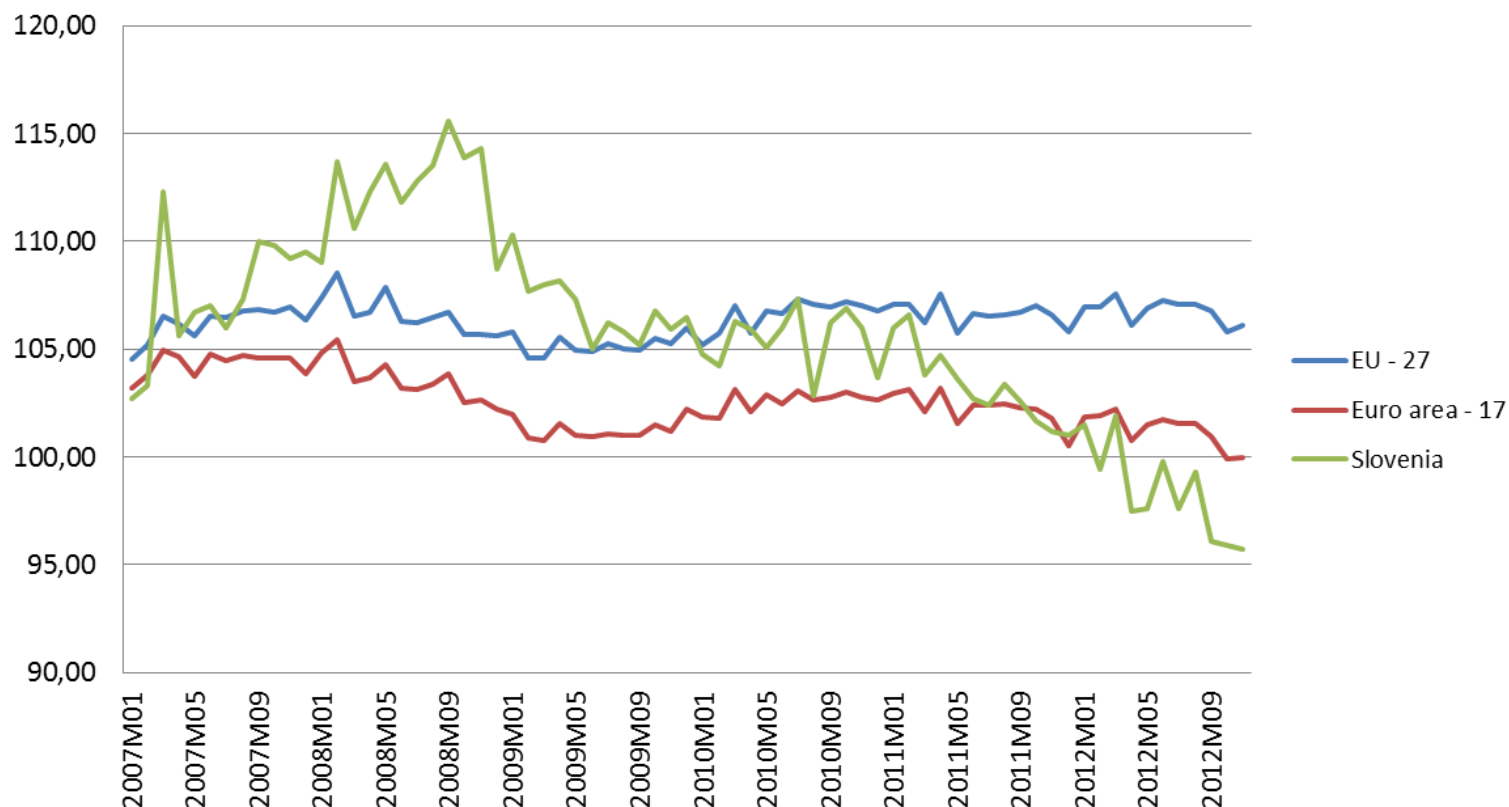
Project meeting/Study visit of project partners

Kopenhagen, Denmark,
4. March 2013- 6. March 2013



Retail trade except of motor vehicles, motorcycles and fuel turnover, January 2007 - November 2012

2005=100, seasonally adjusted, deflated



Source: Eurostat



Table 1: Volume indices of retail trade turnover, Slovenia, January 2013

	<u>I 2013</u> XII 2012	<u>I 2013</u> I 2012
Total retail trade¹⁾	100.8	92.4
Total retail trade except automotive fuel	98.6	92.5
Food, beverages, tobacco	101.5	95.2
Non-food (except automotive fuel)	98.3	91.3

1) In the total retail trade aggregate are included sale of food, beverages, tobacco, sale of non-food products (except automotive fuel) and sale of automotive fuel.

Source: SURS

Table 2: Volume indices of turnover in wholesale, retail trade and repair of motor vehicles and motorcycles, Slovenia, January 2013

	<u>I 2013</u> XII 2012	<u>I 2013</u> I 2012
Wholesale, retail trade and repair of motor vehicles and motorcycles	96.7	91.7

Source: SURS



Volume indices of turnover of retail trade (working day adjusted data)

	(1-12)12 / (1-12)08
47 Retail trade	88,6
47 excl. 47.3 Retail trade, except fuel	87,1
47.3 Automotive fuel in specialised stores	97,4
47.11+47.2 Food, beverages and tobacco	89,3
47.11 Non-specialised stores, predominantly with food	89,8
47.2 Food, beverages, tobacco in specialised stores	72,3
47.19+47.4+47.5+47.6+47.7+47.8+47.9 Retail trade with non-food,	84,5
47.19 Non-specialised stores, predominantly with non-food	94,5
47.73+47.74+47.75 Pharmaceutical, medical, cosmetic and toilet products in specialised stores	104,6
47.51+47.71+47.72 Textiles, clothing, footwear and leather products in specialised stores	103,3
47.43+47.52+47.54+47.59+47.63 Furniture, household equipment, construction material, audio and video equipment in specialised	65,9
47.41+47.42+47.53+47.61+47.62+47.64+47.65+47.76+47.77+47.78 Computers, telecommunications equipment, books, sport equipment, toys, etc. in specialised stores	79,1
47.91 Retail sale via mail order houses or via Internet	63,0
45 Wholesale and retail trade and repair of motor vehicles and	88,6
45.1+45.3+45.4 Motor vehicles, motorcycles, spare parts and	89,5
45.2 Maintenance and repair of motor vehicles	82,6
47+45 Total retail trade and wholesale, retail trade, repair of motor vehicles and motorcycles	90,0
47.52+47.59 Retail trade of furniture and construction material in	58,0
47.43+47.54+47.63 Retail trade of household equipment, audio and video equipment in specialised stores	83,8

Source: Statistical Office of the Republic of Slovenia



Persons in employment by activities, december 2012

	Persons in employment	%
Activities - TOTAL	792.948	100,0
C MANUFACTURING	178.372	22,5
G WHOLESALE AND RETAIL TRADE, REPAIR OF MOTOR VEHICLES AND MOTORCYCLES	106.362	13,4
P EDUCATION	65.279	8,2
Q HUMAN HEALTH AND SOCIAL WORK ACTIVITIES	55.331	7,0
F CONSTRUCTION	53.494	6,7
O PUBLIC ADMINISTRATION AND DEFENCE, COMPULSORY SOCIAL SECURITY	49.635	6,3
M PROFESSIONAL, SCIENTIFIC AND TECHNICAL ACTIVITIES	47.576	6,0
H TRANSPORTATION AND STORAGE	45.452	5,7
A AGRICULTURE, FORESTRY AND FISHING	37.393	4,7
I ACCOMMODATION AND FOOD SERVICE ACTIVITIES	31.397	4,0
N ADMINISTRATIVE AND SUPPORT SERVICE ACTIVITIES	25.342	3,2
J INFORMATION AND COMMUNICATION	22.987	2,9
K FINANCIAL AND INSURANCE ACTIVITIES	22.931	2,9
R ARTS, ENTERTAINMENT AND RECREATION	13.703	1,7
S OTHER SERVICE ACTIVITIES	13.212	1,7
E WATER SUPPLY, SEWERAGE, WASTE MANAGEMENT AND REMEDIATION ACTIVITIES	9.469	1,2
D ELECTRICITY, GAS, STEAM AND AIR CONDITIONING SUPPLY	7.849	1,0
L REAL ESTATE ACTIVITIES	3.983	0,5
B MINING AND QUARRYING	2.682	0,3
T ACTIVITIES OF HOUSEHOLDS AS EMPLOYERS; PRODUCING ACTIVITIES OF HOUSEHOLDS FOR OWN USE	499	0,1

Persons in employment by activities, Slovenia

Activities - TOTAL	2008M12	%	2012M12	%	Index 12/08
Persons in employment	880.252	100	792.948	100	90
Persons in paid employment	790.231	90	699.898	88	89
Self employed persons	90.021	10	93.050	12	103

TRADE	2008M12	%	2012M12	%	Index 12/08
Persons in employment	116.878	100	106.362	100	91
Persons in paid employment	109.330	94	98.149	92	90
Self employed persons	7.548	6	8.213	8	109

Source: Statistical office of the Republic of Slovenia

Source: Statistical Office of the Republic of Slovenia



Persons in employment (without farmers) by educational attainment, by activity, 31. 12. 2011, SLO

		Total		basic or less (%)	upper secondary (%)	tertiary (%)
2008		847.067		18,6	57,6	23,5
2009		812.315		15,4	58,9	25,5
2010		790.967		14,3	58,7	26,9
2011		784.177		13,1	58,1	28,8
	SKUPAJ	784.177				
A	Agriculture,forestry and fishing	4.902	N	30,1	G 75,1	P 66,0
B	Mining and quarrying	2.773	A	27,5	H 73,9	O 56,4
C	Manufacturing	185.012	F	27,0	I 71,2	M 55,4
D	Electricity,gas,steam,air cond.supply	7.892	E	24,3	S 70,8	K 51,7
E	Water supply;sewer.,wst.manag.,remed.act.	9.561	T	23,9	B 70,7	J 49,7
F	Construction	62.057	C	21,2	F 65,2	R 46,8
G	Wholesale,retail;repair of mot.vehicles	109.155	I	19,5	C 64,1	Q 40,9
H	Transportation and storage	46.508	H	13,7	A 58,3	D 39,2
I	Accommodation and food ser.activities	32.307	B	12,4	T 58,1	L 38,0
J	Information and communication	22.708	Q	8,4	E 57,9	S 21,5
K	Financial and insurance activities	23.785	L	8,1	N 57,4	G 18,6
L	Real estate activities	3.990	S	7,7	D 56,1	T 18,0
M	Professional,scientific,technical act.	48.204	R	6,9	L 53,9	E 17,8
N	Administrative and support service act.	26.160	G	6,3	Q 50,7	B 16,9
O	Public admin,defence;compulsory soc.sec.	51.192	P	5,5	J 47,9	C 14,8
P	Education	65.473	M	4,8	K 47,3	A 14,2
Q	Human health and social work activities	54.777	D	4,7	R 46,3	N 12,6
R	Arts,entertainment and recreation	13.909	J	2,4	O 41,6	H 12,4
S	Other service activities	13.246	O	2,0	M 39,8	I 9,3
T	Act.of hhold.as employers;producing act.of hhold for own use	566	K	1,1	P 28,4	F 7,7

Source: SURS



Persons in employment by activity (NACE Rev. 2), 5-year age groups and sex, Slovenia, 2011

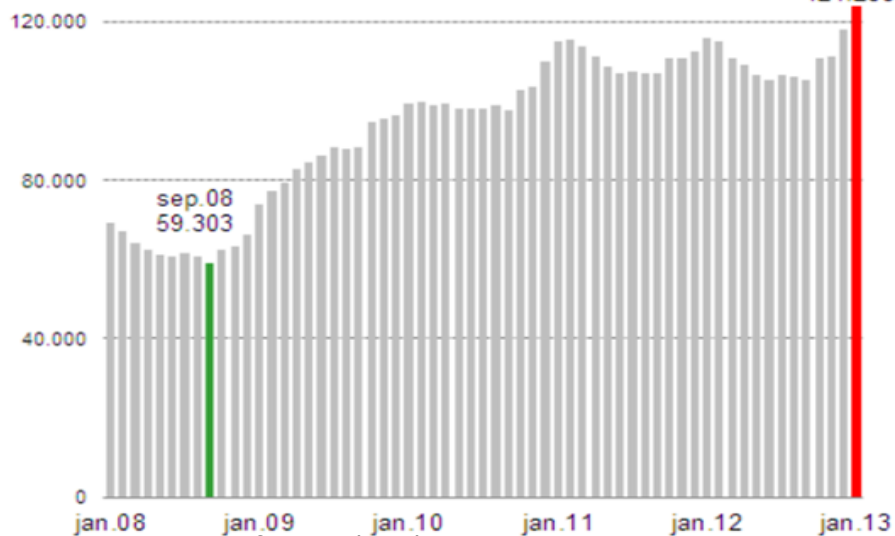
Activities - TOTAL	Age - TOTAL	15-19 years	20-24 years	25-29 years	30-34 years	35-39 years	40-44 years	45-49 years	50-54 years	55-59 years	60-64 years	65 years and over
Sex - TOTAL	817.311	0,2	3,7	11,2	15,5	15,7	15,2	15,9	13,7	7,5	1,3	0,2
Men	452.062	0,3	4,5	11,4	15,2	15,1	14,4	14,9	13,1	8,9	1,9	0,3
Women	365.249	0,1	2,7	10,9	15,8	16,3	16,1	17,1	14,4	5,7	0,6	0,1
G - Trade	Age - TOTAL	15-19 years	20-24 years	25-29 years	30-34 years	35-39 years	40-44 years	45-49 years	50-54 years	55-59 years	60-64 years	65 years and over
Sex - TOTAL	109.157	0,2	4,4	13,6	18,2	17,5	14,2	14,4	11,5	5,3	0,6	0,1
Men	52.429	0,3	5,3	13,3	18,0	17,3	13,8	13,2	10,4	7,2	1,1	0,1
Women	56.728	0,1	3,5	13,9	18,5	17,6	14,6	15,6	12,5	3,5	0,2	0,0

Source: Statistical Office of the Republic of Slovenia.



Registered unemployed persons Jan 08 – Jan 13

jan.13
124.258



Source: Register of Unemployed Persons

Chart 1: The registered unemployment rate by sex, Slovenia, January 2008 - November 2012

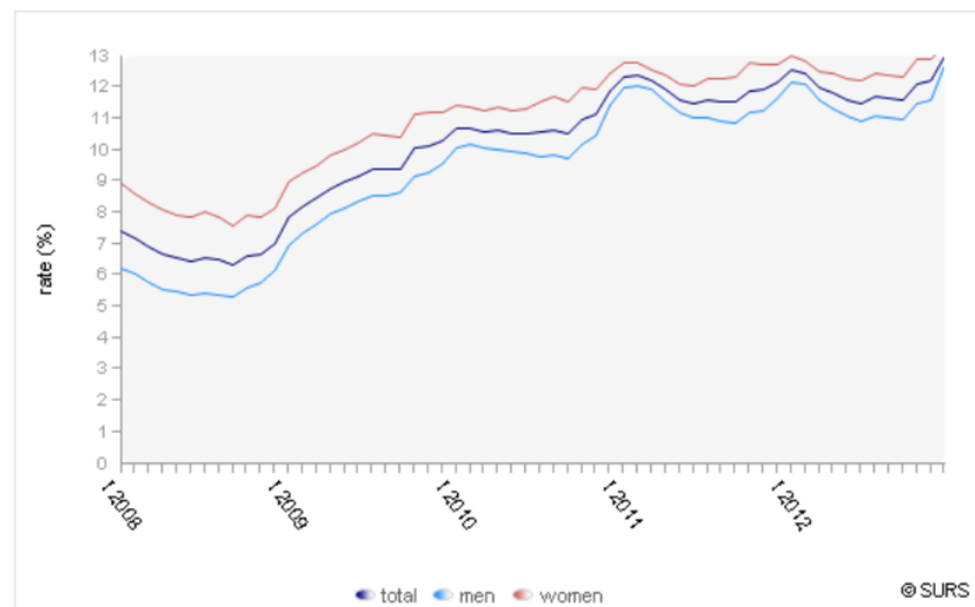


Table 1: Population by activity, Slovenia, 4th quarter 2012

	Total	Men	Women
	1000		
Population total	2,056	1,017	1,039
Labour force	1,020	552	467
- employed	922	502	420
- unemployed	97	50	47
Inactive	741	313	428

Source: SORS

Table 2: Measures of activity of the population, Slovenia, 4th quarter 2012

	Total	Men	Women
	%		
Unemployment rate	9.6	9.1	10.1
Activity rate	57.9	63.8	52.2
Employment rate	52.4	58.0	46.9

Source: SORS

For Table1 and Table 2 the source of data is the Labour Force Survey, which is based on internationally harmonised definitions of the International Labour Organization (ILO) and Eurostat. Data differ from monthly published data on labour force because of the differences in definitions and sources.



Registered unemployed persons by age groups,
december 2012

Age (years)	number	%
< 17	153	0
18 - 24	10.743	9
25 - 29	16.954	14
30 - 39	26.420	22
40 - 49	23.632	20
50 - 59	36.805	31
> 60	3.354	3
Total	118.061	100

Registered unemployed persons by educational attainment,
december 2012

Education	number	%
I	35.010	30
II	5.657	5
III	918	1
IV	28.587	24
V	31.018	26
VI	4.710	4
VII+VIII	11.119	9
bologna prog.	1.042	1
TOTAL	118.061	100

Registered unemployed persons by
duration of unemployment, december 2012

Duration	number	%
< 2 months	30.704	26
3 - 5 months	16.748	14
6 - 8 months	9.001	8
9 - 11 months	7.848	7
12 - 23 months	20.188	17
24 - 35 months	12.040	10
3 - 4 months	12.292	10
5 - 7 years	4.993	4
> 8 years	4.247	4
TOTAL	118.061	100

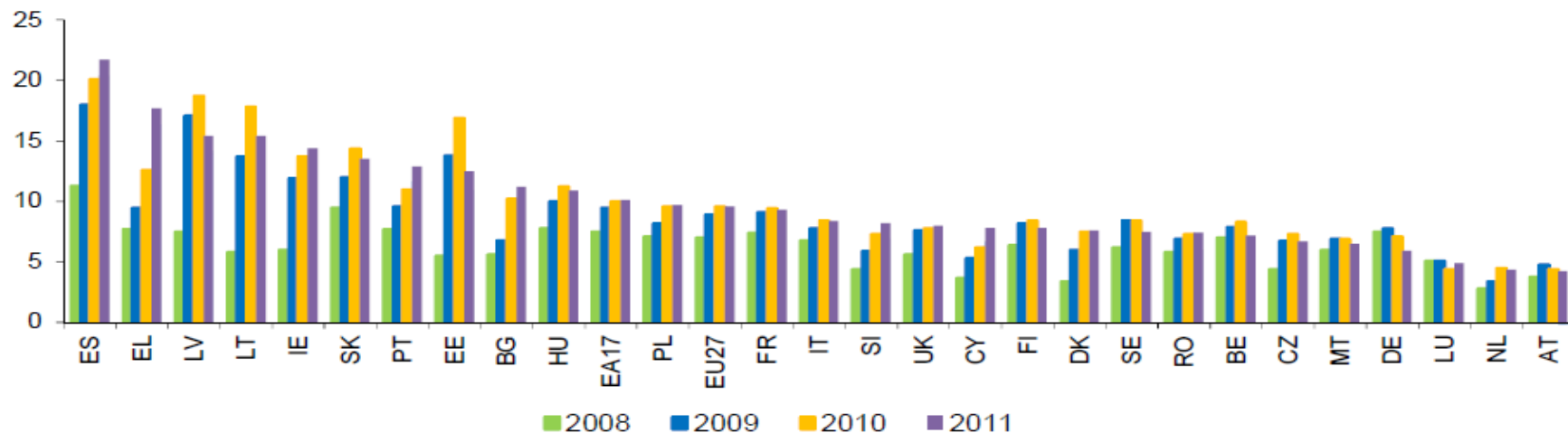
Work experience of registered unemployed persons, 31. 12.

	2005	2007	2008	2009	2010	2011
TOTAL	92.575	68.411	66.239	96.672	110.021	112.754
	100%	100%	100%	100%	100%	100%
Without work experience	27	22	19	17	16	16
Less than 1 year	7	7	7	7	6	6
1 to less than 2 years	5	5	5	6	5	5
2 to less than 3 years	3	3	4	4	4	4
3 to less than 5 years	5	5	5	6	6	6
5 to less than 10 years	9	9	9	10	10	10
10 to less than 20 years	15	15	15	15	15	15
20 to less than 30 years	16	17	18	18	16	17
30 years or more	12	17	17	17	22	20

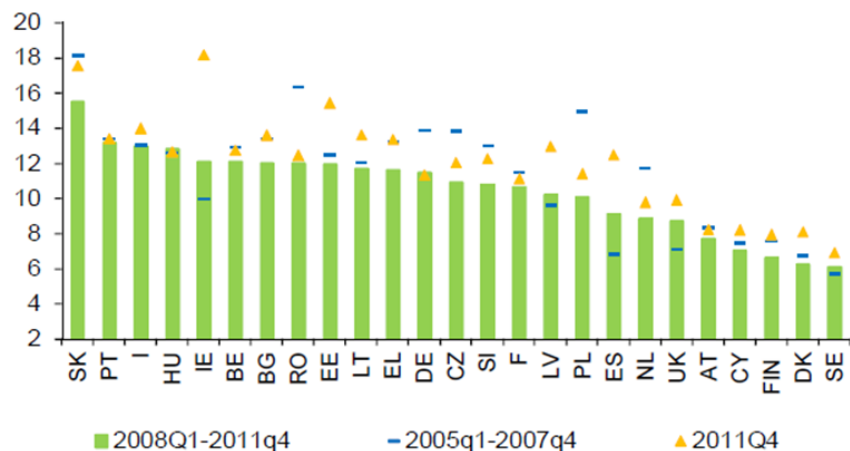
Source: Employment Service of Slovenia



Unemployment rates in the EU Member States: 2008-2011 (15-74 years, as % of labour force) Source: EC, Labour Market Developments in Europe 2012

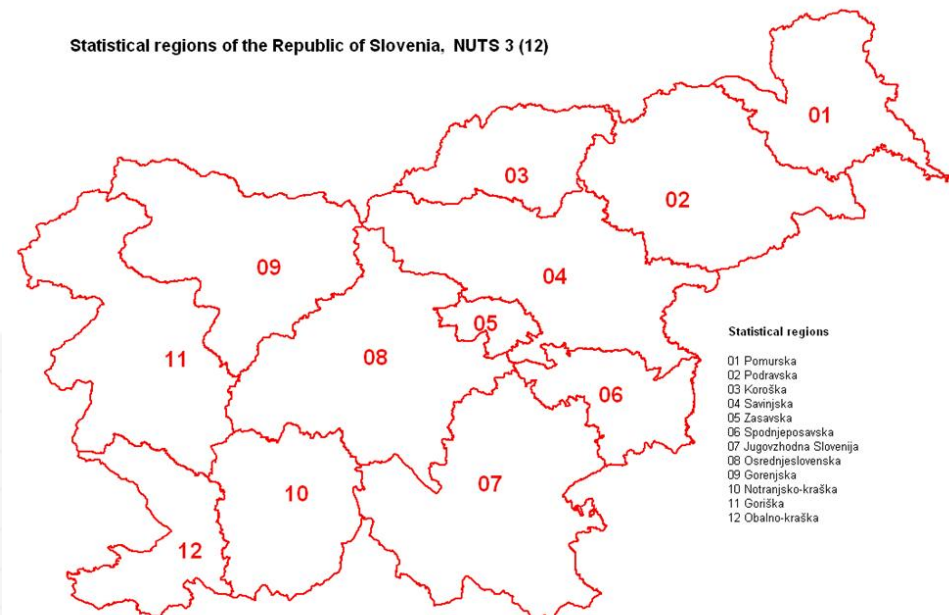


Unemployment duration in months





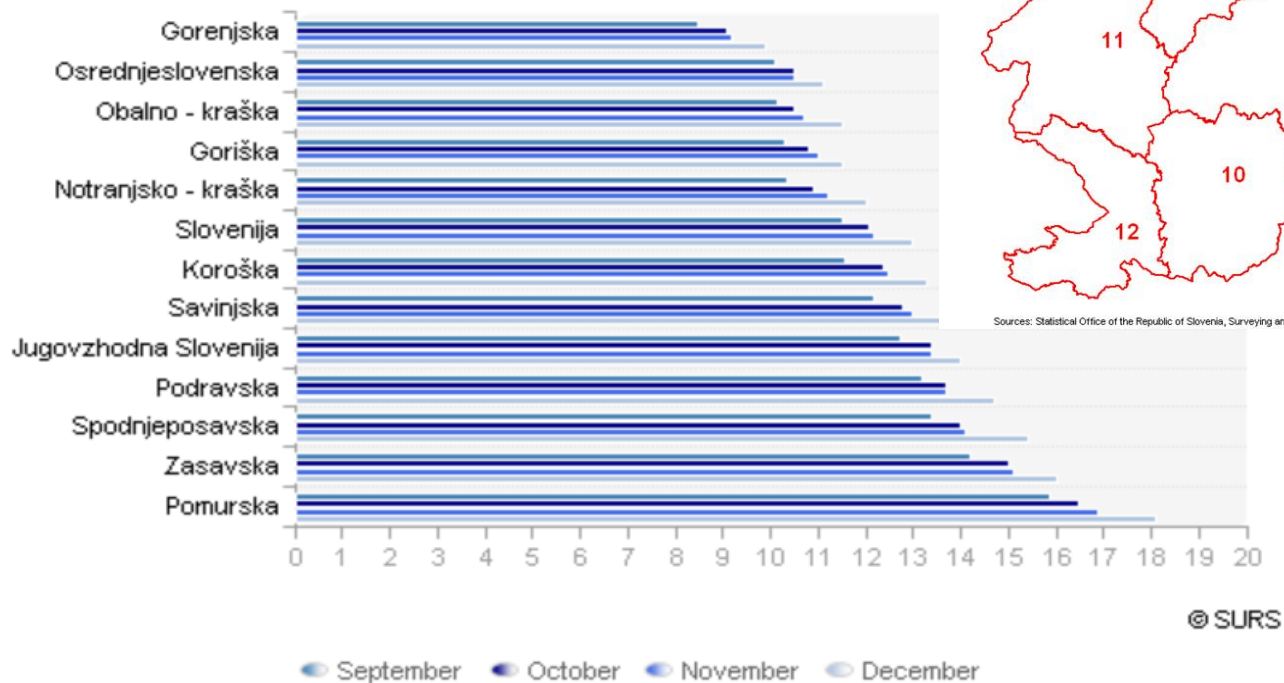
Statistical regions of the Republic of Slovenia. NUTS 3 (12)



- Statistical regions**
- 01 Pomurska
 - 02 Podravska
 - 03 Koroška
 - 04 Savinjska
 - 05 Zasavska
 - 06 Spodnjeposavska
 - 07 Jugovzhodna Slovenija
 - 08 Osrednjeslovenska
 - 09 Goriška
 - 10 Notranjsko-kraška
 - 11 Goriška
 - 12 Obalno-kraška

Sources: Statistical Office of the Republic of Slovenia, Surveying and Mapping Authority of the Republic of Slovenia

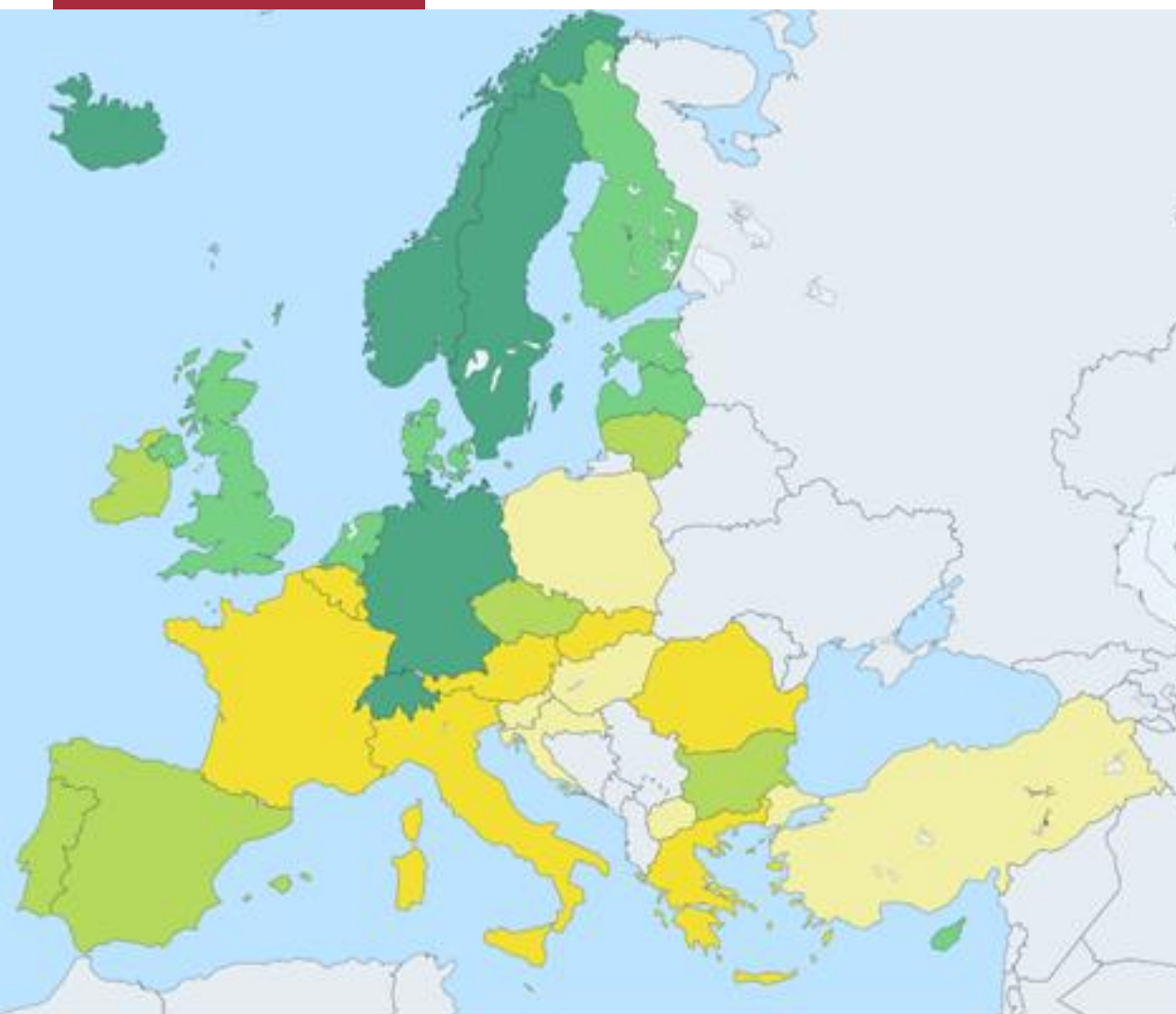
The registered unemployment by statistical regions, September 2012 – December 2012



© SURS

● September ● October ● November ● December

Source: SURS



Data for 2011

Legend	Cases
31.2 - 37.1	7
37.1 - 41.5	8
41.5 - 50.1	6
50.1 - 59.5	7
59.5 - 79.2	5
Data not available	0

Chart: The employment rate of older workers (calculated by dividing the number of persons in employment and aged 55 to 64 by the total population of the same age group).

The indicator is based on the EU Labour Force Survey.